



YouTube



Facebook



LinkedIn

CHEN HSONG

Add.: Unit 2001, 20th Floor, Citicorp
Centre, 18 Whitfield Road,
Hong Kong

Tel.: +852 2665-3888 | 2665-3222

Email: mr@chenhsong.com

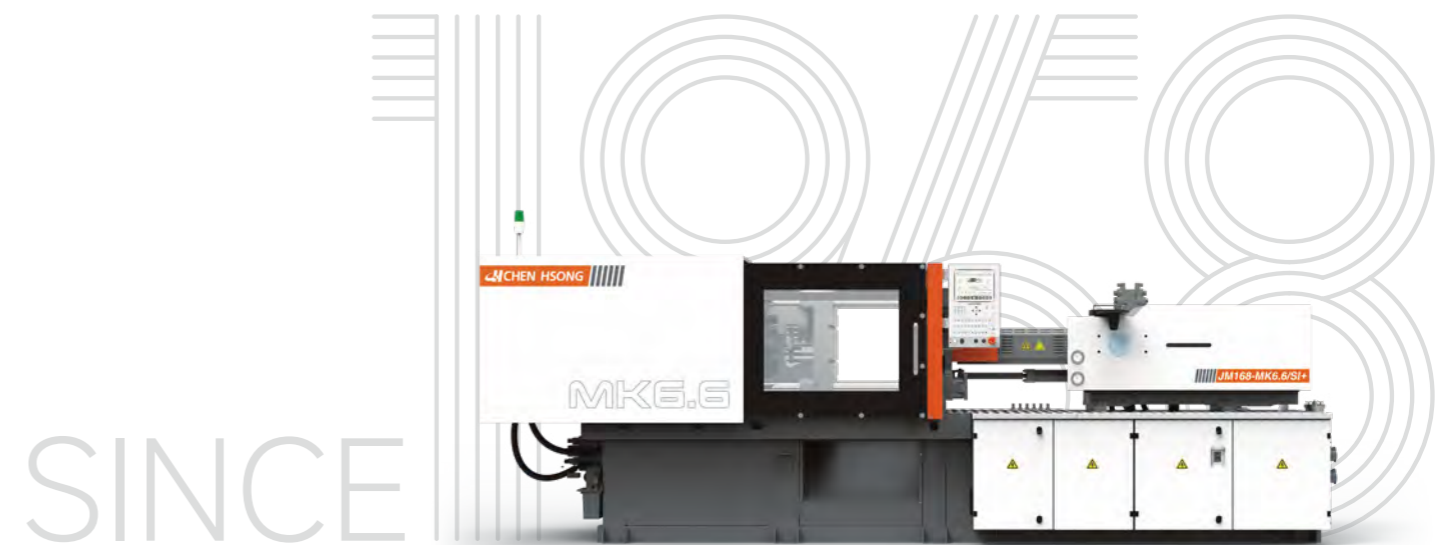
Web.: www.chenhsong.com

CH 20260409-CV

MK6.6/SI+

Série International

88-658T



CHEN HSONG

Powering Your Future in Intelligent Injection Molding

Driven by its founding principle, "Your Vision is Our Mission", the Chen Hsong Group, established in 1958 and publicly listed in Hong Kong since 1991, has evolved over nearly 70 years from an injection molding machine manufacturer into a one-stop total solutions provider in plastics manufacturing. As one of the world's largest producers of injection molding machines, Chen Hsong achieves unmatched quality through complete in-house manufacturing. This vertically integrated approach means controlling everything from ductile iron castings, parts fabrication and core components (such as advanced controllers) to final assembly. With a comprehensive product matrix serving diverse industries like automotive and medical, we are also spearheading smart manufacturing upgrades through the iChen™ Smart Family Suite, including the iChen™ Smart Factory MES, iChen™ Cloud platform, and iChen™ AI Molder, making the path to Industry 4.0 easily accessible for our global clientele.

1,000,000m²

R&D and Production Facilities (Five locations)

85+

Countries Globally

1,000,000+

Injection Molding Machines in the Field



Hong Kong Headquarters



Shenzhen Industrial Park Facility **560000m²**



Taiwan Taoyuan Facility **30000m²**



Foshan Shunde - Two Facilities **150000m²**



Zhejiang Ningbo Facility **70000m²**



Shanwei Luhe Facility **62360m²**

Over 1 Million+ Chen Hsong Machines Are in Operation Worldwide.

They all use Chen Hsong.

MK6.6/SI+ Série International

Providing 100% Reliable Manufacturing for Your Requirements

Whether producing appliances, household goods, components, or packaging, the top demand for production equipment ultimately comes down to reliability.

Our injection molding machines, characterised by their stability, durability, and versatility, have become a proven core component in numerous manufacturing lines.



New Energy Electronics



Automotive



Electronics



3C Electronics



Electronic Toys



Cosmetic Packaging



Medical Consumables



Home Appliances



Toys

*Phtots are for reference only.

MK6.6/SI+: Your High Adaptability All-Rounder



Well-suited For All Applications

New mixing screw specifically designed to suit most material types and mixing requirements.



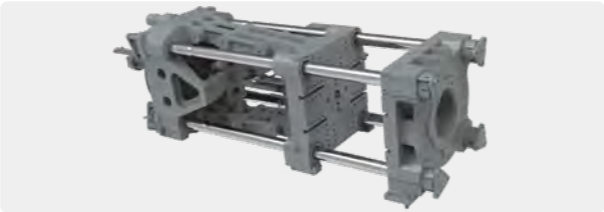
Shorter Cycles & Higher Production Efficiency

With high-response control systems and intelligent mold opening/closing, stability is achieved quickly even under frequent production task changes.



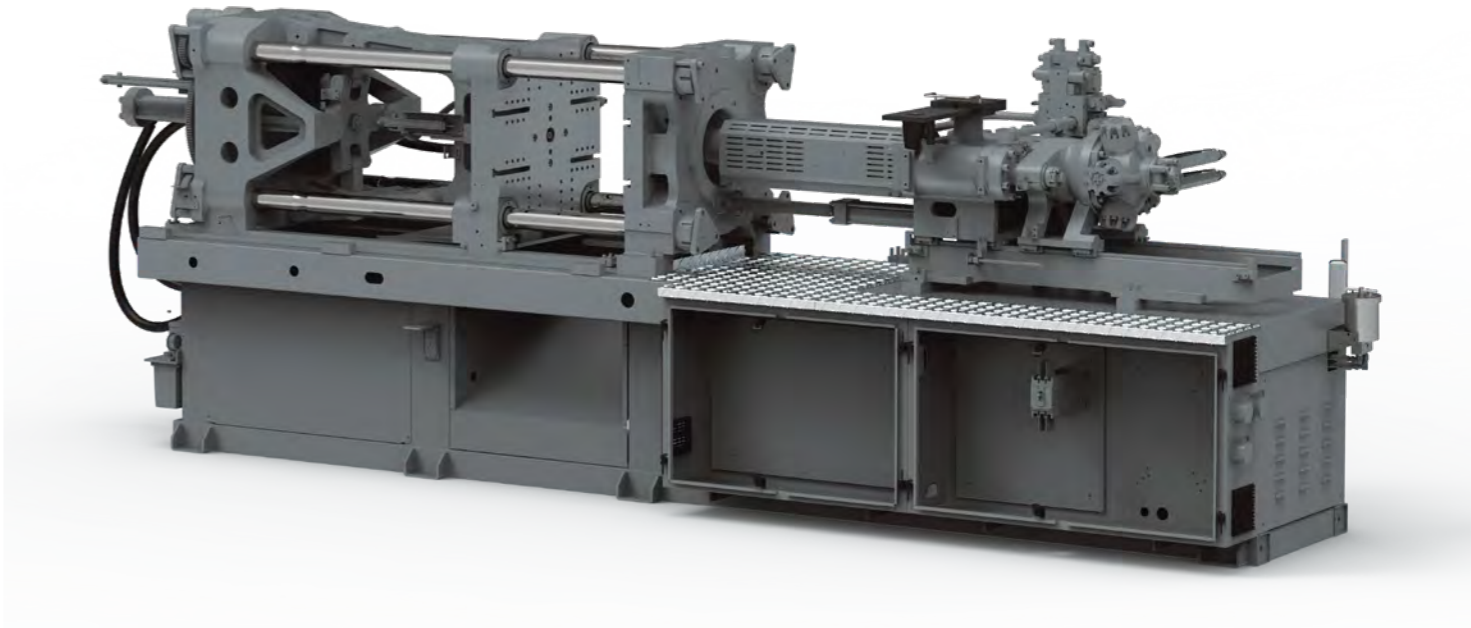
Unrivaled Versatility

One machine engineered to accommodate diverse mold specifications with ease.



Zero-Interruption Productivity

True efficiency requires zero downtime. MK6.6/SI+ is engineered with complete system stability to ensure flawless, continuous production.



Structural Stability

A high-rigidity machine base effectively minimizes deformation, ensuring uniform mold pressure and long-term durability.

Motion Stability

Toggle design from decades of experience, optimised motion control profile guarantees high speed with high stability.

Pressure Stability

Precision Hydraulics™ for stable output, every cycle. Minimises fluctuations and delivers fast response times for perfectly stable production.

Control Stability

Smart interface for seamless, reliable control. Features a user-friendly 10-inch touchscreen that simplifies tuning and maintains consistent control across continuous production runs.



The “Worry-Free” Approach

No-fuss operation, built to last.

Product Specifications

Product: LED Lighting Part
 Weight: 121g
 Cavity: 1-out-8
 Material: PC (Polycarbonate)
 Cycle Time: 30.5s



Energy Consumption Comparison

MK6.6/SI+ vs Industry average for 160T

Model	Cycle Time (s)	Production Time (h)	Energy Consumption (kWh)	Total Number of Cycles	Total Product Weight(g)	Average Energy Consumption per kg(kWh/kg)	Average Energy Consumption per Cycle(kWh/Shot)
JM168-MK6.6/SI+	30.5	8	52.7	944	114256	0.461	0.0558
Industry average for 160T	35.7	8	57.6	807	98420	0.585	0.0714

How much more can the MK6.6/SI+ produce compared to the industry average for machines of the same tonnage over a 10-years?

The "Extra Production" Formula

$$(944-807) \times 3 \times 21/24 \times 30 \times 11 \times 10 = 1,186,762$$

Gain per 8h Shift (MK6.6 vs Avg) Shifts per Day (24h) Daily Uptime (Operating 21h/day) Days per Month Months per Year Years (Lifecycle) Additional Shots (Total Gain)

How much money you save on electricity.

The "Cost Saving" Formula

$$(0.0714-0.0558) \times 8,000,000 \times 0.23 = \$ 27,968$$

Energy Saved per Shot(kWh) Total Production (10 Years) Electricity Cost (\$/kWh) Total Savings (US)

98% Repeat Order Rate

The Stable Workhorse Powering Global Factories

From major factories to production lines worldwide, the MK6.6 series has earned its reputation as the Stable Mainstay. It is engineered to be a machine that simply works without causing trouble, combining a proven core structure with a hassle-free user experience.



Choosing Chen Hsong means choosing a lasting partnership. Our customers know that our machines stand for proven reliability.

MK6.6/SI+ | Specifications

	UNIT	JM88-MK6.6/SI+	JM128-MK6.6/SI+	JM168-MK6.6/SI+	JM208-MK6.6/SI+	JM268-MK6.6/SI+	JM328-MK6.6/SI+	JM408-MK6.6/SI+	JM488-MK6.6/SI+	JM568-MK6.6/SI+	JM658-MK6.6/SI+																				
INJECTION UNIT																															
Screw Diameter	mm	31	36	41	36	41	46	41	46	52	46	52	60	52	60	67	60	67	75	67	75	83	75	83	90	75	83	90	83	90	98
Screw L/D Ratio	/	24.4	21	18.4	23.9	21	18.7	23.6	21	18.6	23.7	21	18.2	24.2	21	18.8	23.5	21	18.8	23.5	21	19	23.2	21	19.4	23.2	21	19.4	23.9	22	20.2
Theoretical Injection Volume	cm ³	135	183	237	208	270	340	303	382	488	431	551	734	636	847	1057	946	1180	1479	1321	1655	2027	1832	2244	2638	1832	2244	2638	2433	2861	3392
Max. Injection Capacity (PS)	g	123	166	216	189	246	309	276	347	444	393	502	668	579	771	962	861	1074	1346	1202	1506	1845	1667	2042	2401	1667	2042	2401	2214	2603	3087
Max. Injection Pressure	MPa	250	186	143	228	176	139	222	176	138	220	172	130	230	173	138	222	178	142	221	176	144	216	176	150	216	176	150	211	180	152
Max. Injection Rate	cm ³ /s	82	111	144	119	154	194	152	192	246	194	247	330	236	314	391	305	381	477	335	420	514	411	503	592	477	584	686	536	630	748
Max. Injection Speed	mm/s	109			117			115			116			111			108			95			93			108			99		
Max. Injection Distance	mm	180			205			230			260			300			335			375			415			415			450		
Max. Screw Rotation Speed	rpm	225			230			220			205			190			180			155			170			170			150		
Max. Nozzle Contact Force	kN	45			45			45			45			91			91			91			91			91			91		
Max. Nozzle Distance	mm	250			250			250			280			330			360			420			420			420			460		
CLAMPING UNIT																															
Max. Clamping Force	kN	880			1280			1680			2080			2680			3280			4080			4880			5680			6580		
Max. Opening Force	mm	330			370			420			490			530			600			670			770			835			920		
Platen Dimensions (HxV)	mm	510×510			570×570			660×660			740×740			810×845			930×945			1000×1050			1120×1145			1190×1210			1260×1300		
Tie Bar Distance (HxV)	mm	360×360			410×410			460×460			530×530			580×580			660×660			730×730			810×810			855×855			910×900		
Mold Thickness (Min-Max)	mm	130-360			145-430			160-500			180-520			195-570			220-660			250-710			275-780			330-850			350-900		
Max. Daylight	mm	690			800			920			1010			1100			1260			1380			1550			1685			1820		
Max. Ejector Force	kN	28			42			42			67			77			77			111			111			166			182		
Max. Ejector Distance	mm	100			120			140			150			170			170			220			220			250			265		
Ejector Pin	PCS	5			5			5			9			13			13			13			17			17			21		
Locating Ring Diameter	mm	100			100			100			160			160			160			200			200			200			200		
OTHERS																															
System Pressure	MPa	17.5			17.5			17.5			17.5			17.5			17.5			17.5			17.5			17.5			17.5		
Motor Power	kW	17			20			25			29			35			48			51			58			67			70		
Max. Heating Capacity	kW	6.9			10.6			13			16.2			19.7			25.7			31.3			36.9			36.9			44.3		
Temperature Control Zone	Zone	3+1			3+1			3+1			3+1			4+1			4+1			5+1			5+1			5+1			6+1		
Machine Dimension (LxWxH)	m	4.4×1.2×1.9			4.7×1.3×2			5.3×1.4×2			5.9×1.5×2.1			6.5×1.6×2.3			7.2×1.7×2.4			7.9×1.9×2.3			8.6×1.9×2.3			8.8×1.9×2.3			9.6×2.2×2.4		
Oil Tank Capacity	L	120			160			200			250			320			400			440			530			610			680		
Machine Weight	kg	2950			3550			4550			6100			7850			10400			13800			17000			19000			24500		

The company keeps upgrading the products and reserves the right to change the product specifications and parameters without prior notice.
The final interpretation to the above specifications and parameters belongs to the company

MK6.6/SI+ | Features

Note: ● Standard, ○ Optional, × Not Available.

		MK6.6/SI+
INJECTION UNIT	1. Integral Injection Unit Carriage Base with Linear Guides Rails	●
	2. Low Speed High Torque Hydraulic Motor	●
	3. Dual Cylinder Balance Injection System	●
	4. Dual Injection Carriage Cylinder(268-658T)	●
	5. Bi-metallic light maxing screw	●
	6. Digital Back Pressure	●
	7. Nozzle Guard and High-Temperature Protective Cover for the Nozzle Guard	●
	8. Auto-Purge Function	●
	9. Hopper Sliding Chute	●
	10. Screw RPM Display	●
	11. Temperature PID Control System	●
	12. Nozzle Centering Adjustment	●
	13. Extension Nozzle	○
	14. Extension(Reduction)Injection	○
	15. Enlarged Hydraulic Motor	○
	16. Barrel Cooling Solenoid Valve Control	○
	17. Dual Metal Screw and Barrel Set	○
	18. Barrel Fan coolinerg Set	○
	19. Barrel Energy-Saving Set (Infrared Heater Band)	○
	20. Injection Manual pump Lubrication	○
	21. Hopper	○
	22. Hopper Sliding Plate (408-658T)	○

		MK6.6/SI+
CLAMPING UNIT	1. Mount Hole + T-Slot	●
	2. High-Tensile Chrome-Plated Tie Bar	●
	3. High-end Ductile Casted Platens	●
	4. Hydraulic drive Gear Adjustment	●
	5. Auto Mold Thickness Adjustment	●
	6. Ejector Pull-Back system	●
	7. Toggle Auto Lubrication	●
	8. Electrical and Hydraulic Dual Protection	●
	9. Ejector Distance Adjustment function	●
	10. Increase Mold Thickness	○
	11. Multi Core Pull Set	○
	12. Multi Air Blow Set	○
	13. Increase Ejector Force	○
	14. Ejector Distance	○
	15. Robot Arm Bolt Hole Interface (EU 18)	○
	16. Add Mold Insulation Board	○
	17. Manual Grease Pump Lubric	○

		MK6.6/SI+
HYDRAULIC SYSTEM	1. Internal Gear Pump	●
	2. Hydraulic Control Assembly	●
	3. Servo Motor and Pressure Control	●
	4. Low-Pressure Mold Protection Function	●
	5. Suction Filter and Bypass Filter	●
	6. High-Efficient Cooler	●
	7. Proportional Valve for Clamping	○
	8. Enlarged Cooler	○
	9. Oil Temperature Closed Loop Control and Detection	○
	10. High/Low Oil Temperature Alarm	○
	11. Unscrewing Function	○
	12. Enlarged Servo Motor	○
	13. Hydraulic Oil Pre-Heat	○
	14. Highly Stable Hydraulic Hoses Add Safety Chains	○

		MK6.6/SI+
CONTROLLER	1. Chen Hsong 10-inch Intelligent Panel	●
	2. Rapid-Response Servo System	●
	3. PID Temperature Control	●
	4. Screw RPM Display	●
	5. Broken Thermocoupe Detection	●
	6. Cold-Start Prevention	●
	7. Multi Power Socket	●
	8. Emergency Stop Switches on Both Guard Doors	●
	9. Tri-Color Status Indicator	●
	10. Robot Arm Interface (Non-Euromap)	●
	11. Auto-Insulator and Heating Function	●
	12. Various Languages	●
	13. Process Parameter Lock Function	●
	14. 12-Inch Intelligent Panel	○
	15. EU67/EU12	○
	16. Hot Runner Interface	○
	17. Air Blow	○
	18. Additional Core Pull Interface On Moving Platen	○

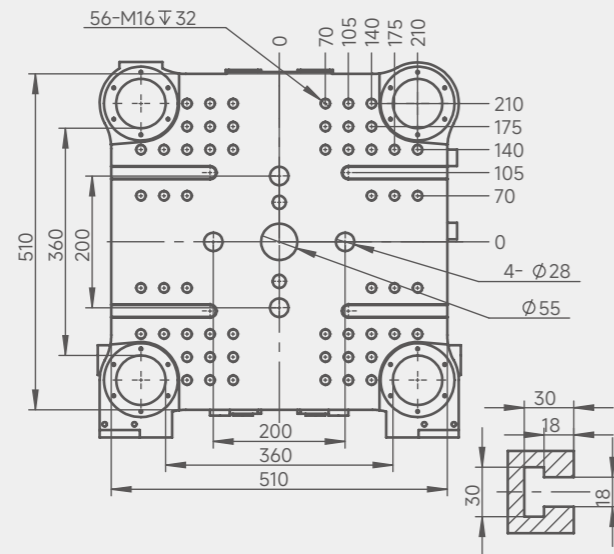
		MK6.6/SI+
OTHERS	1. Tool Box and Wear Parts	○
	2. Level Pad	○
	3. Mold Plate	○
	4. Aux.Equipment (Resin Dryer, etc.)	○

The company keeps upgrading the products and reserves the right to change the product specifications and parameters without prior notice. The final interpretation to the above specifications and parameters belongs to the company

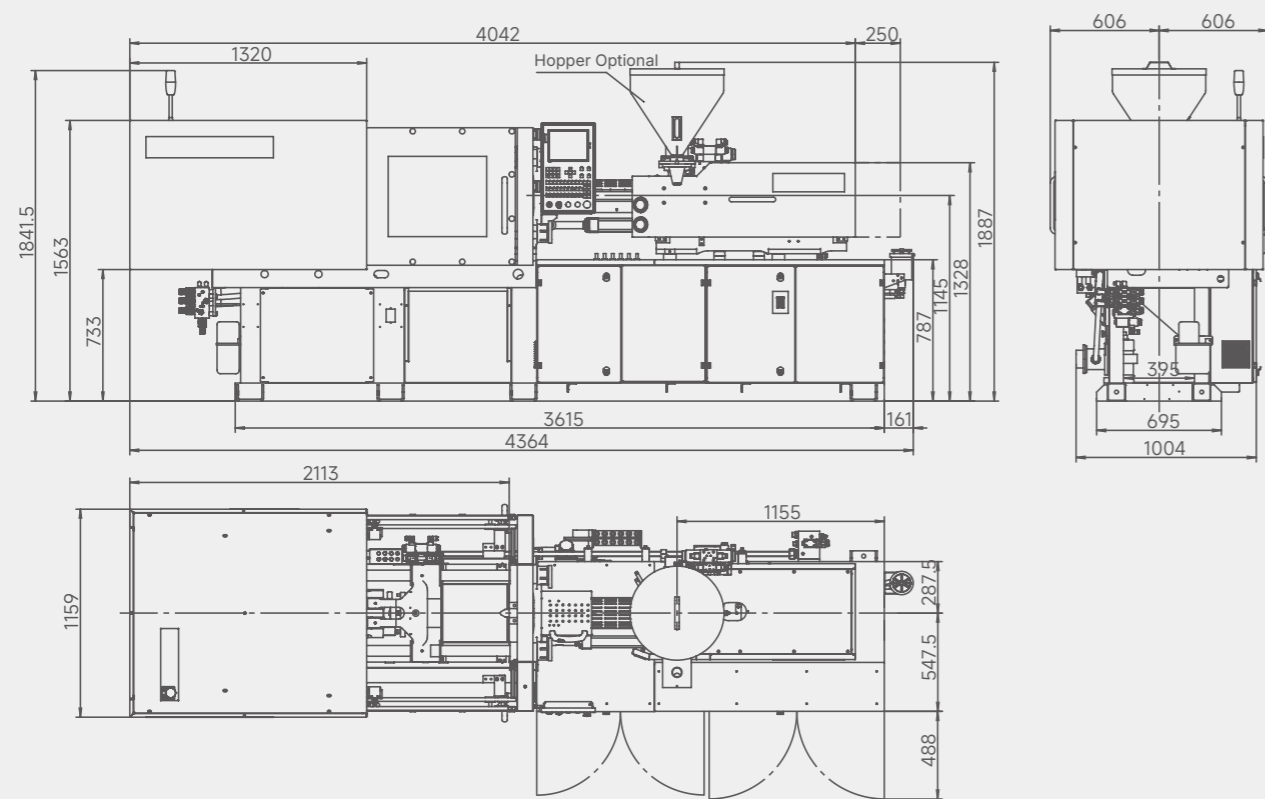
MK6.6/SI+ | Platen and Machine Dimensions

JM88-MK6.6/SI+

Platen Dimensions

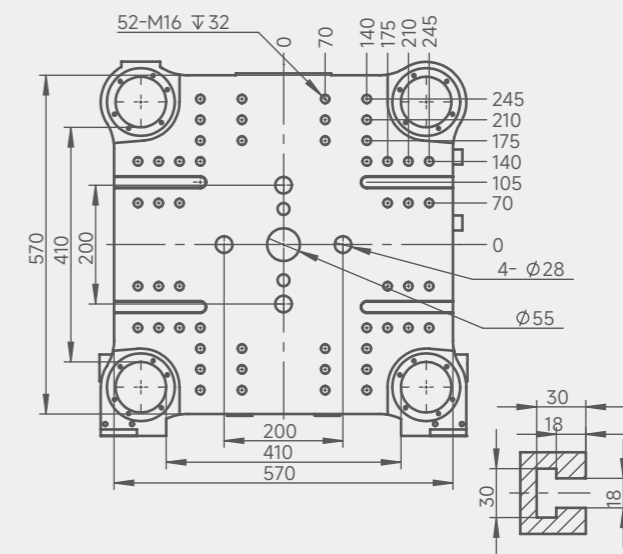


Machine Dimensions (LxWxH)

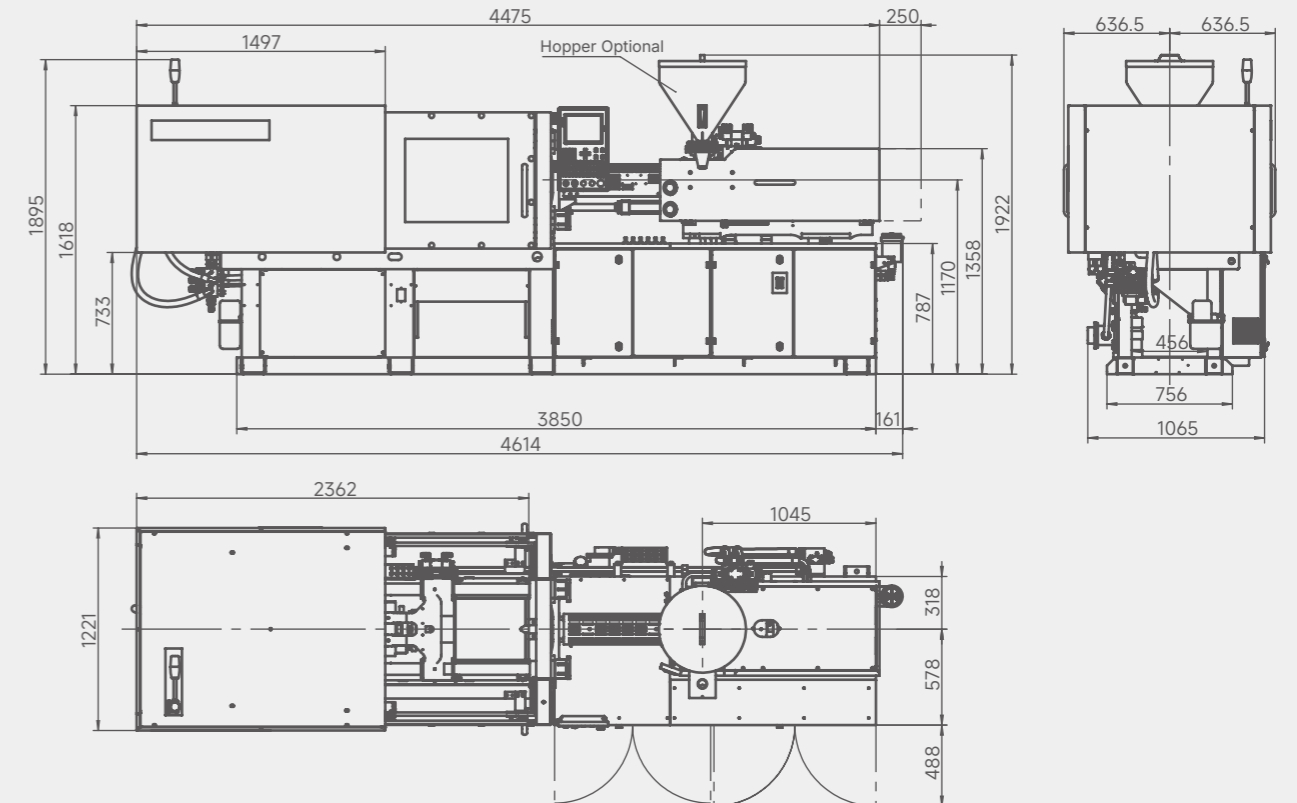


JM128-MK6.6/SI+

Platen Dimensions



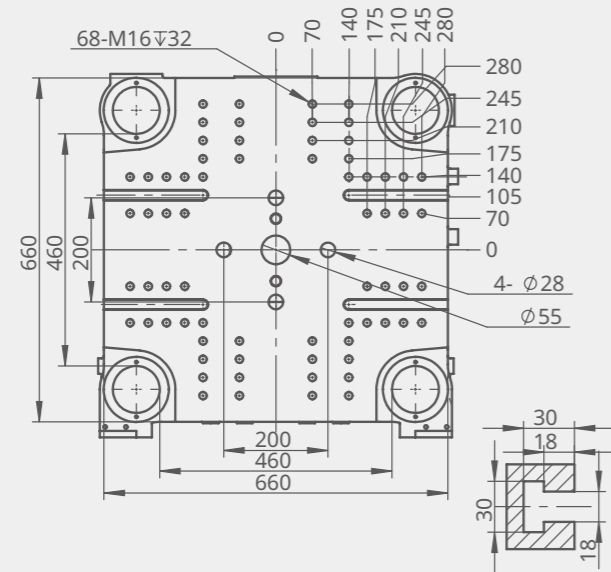
Machine Dimensions (LxWxH)



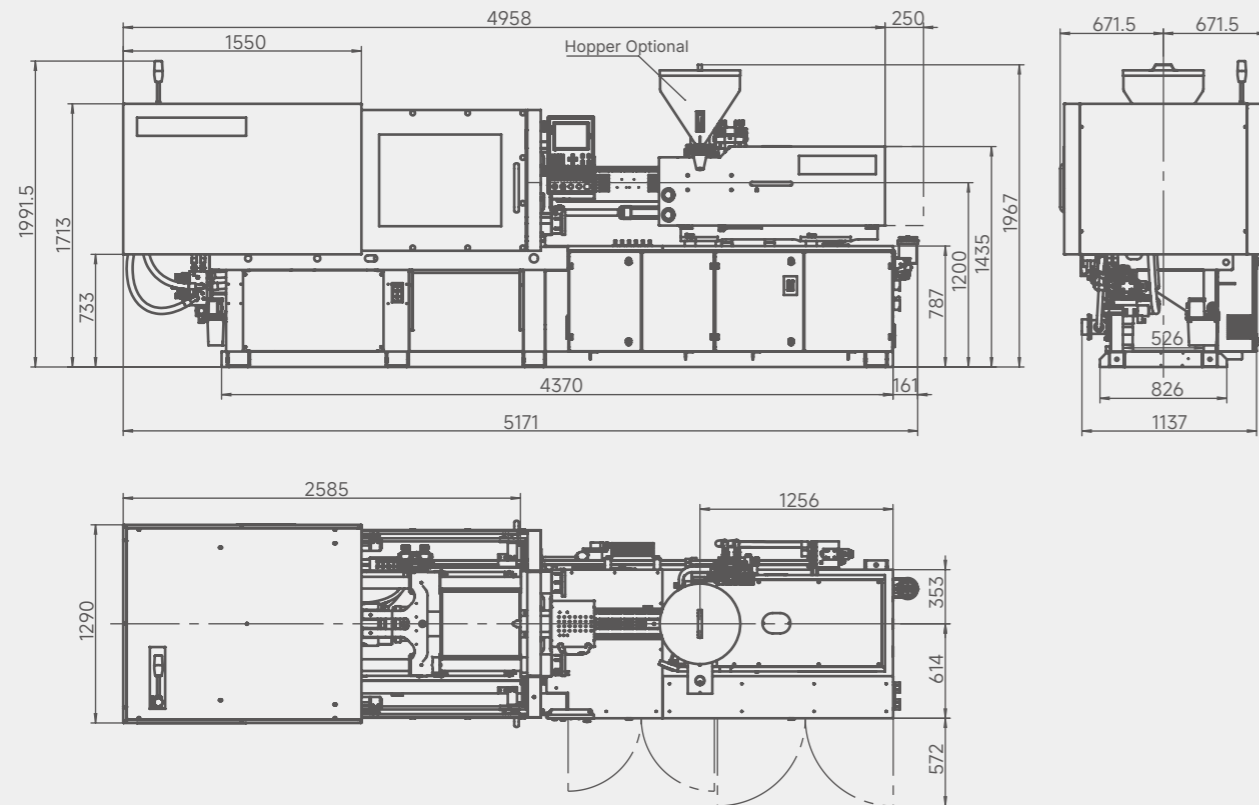
MK6.6/SI+ | Platen and Machine Dimensions

JM168-MK6.6/SI+

Platen Dimensions

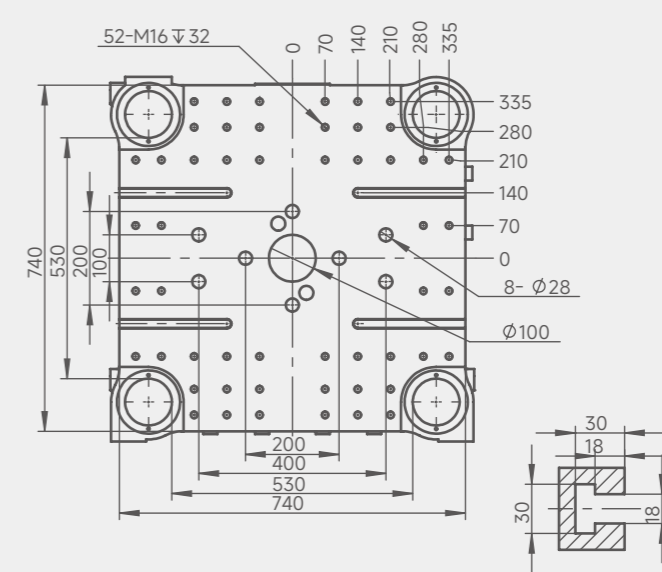


Machine Dimensions (LxWxH)

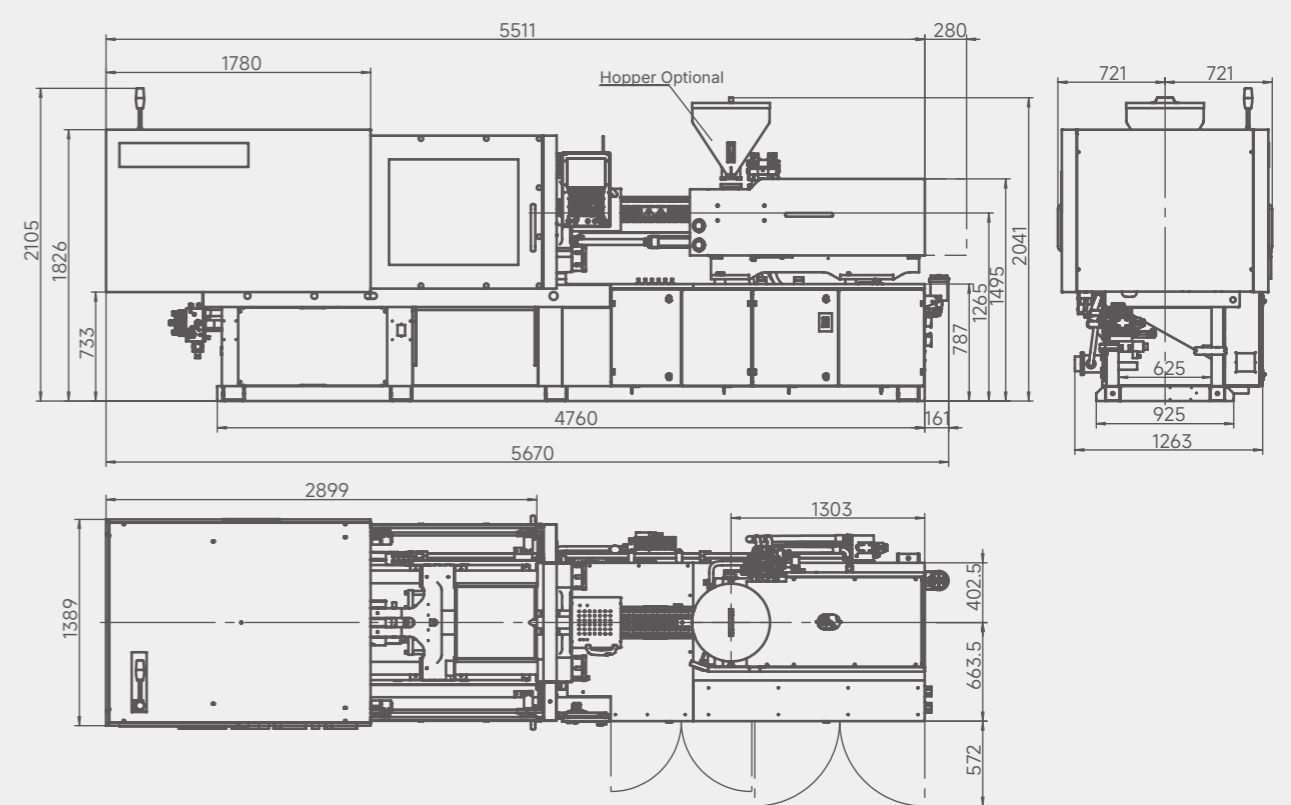


JM208-MK6.6/SI+

Platen Dimensions



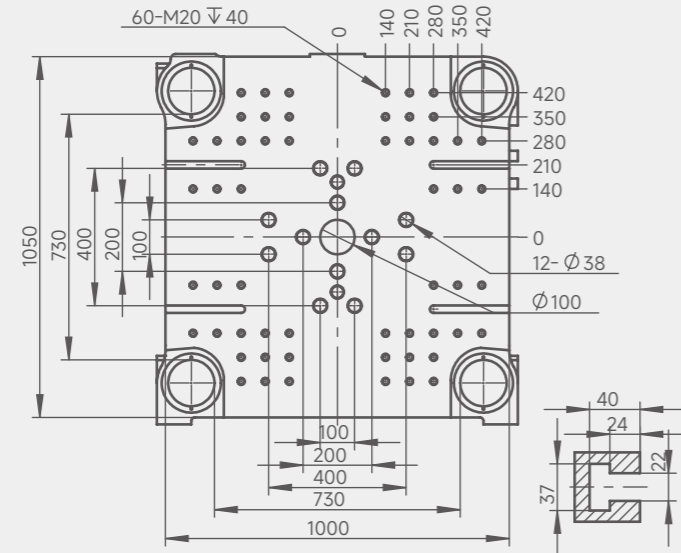
Machine Dimensions (LxWxH)



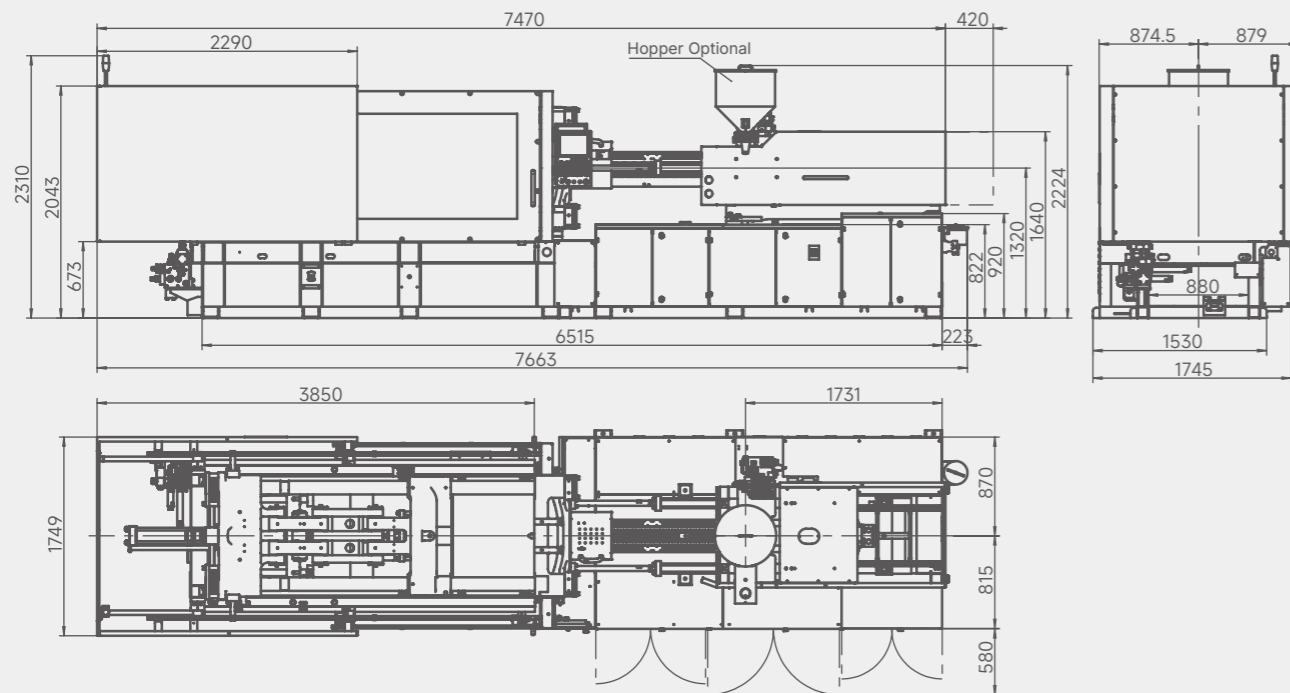
MK6.6/SI+ | Platen and Machine Dimensions

JM408-MK6.6/SI+

Platen Dimensions

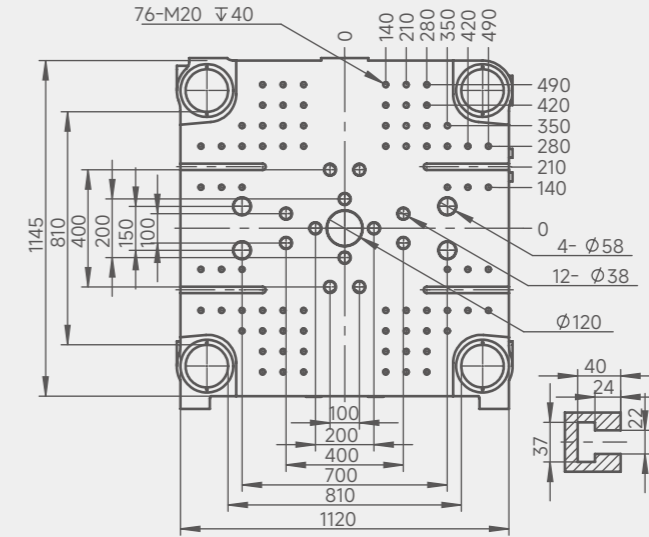


Machine Dimensions (LxWxH)

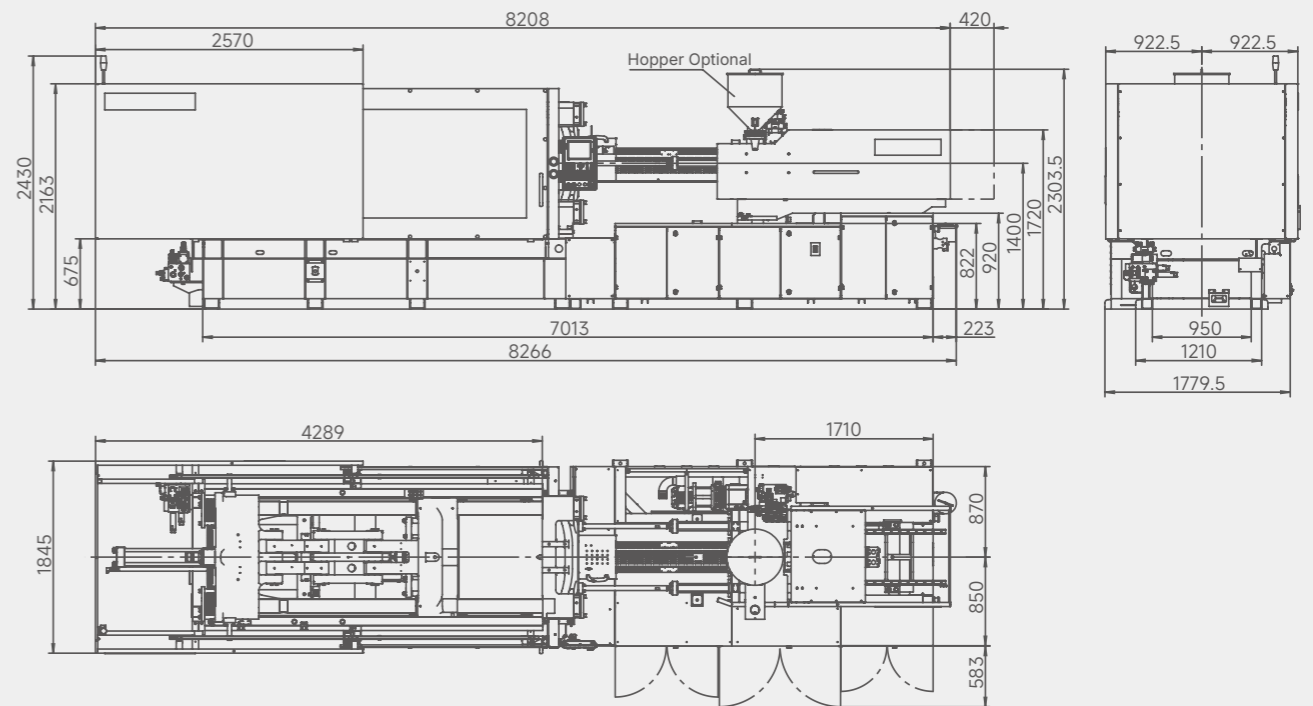


JM488-MK6.6/SI+

Platen Dimensions



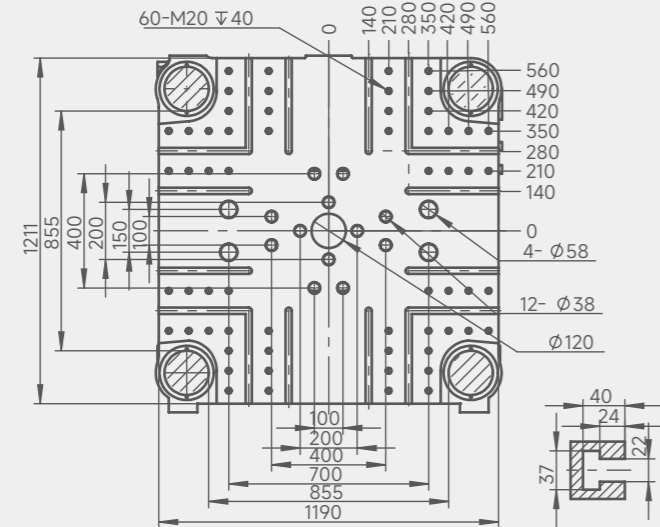
Machine Dimensions (LxWxH)



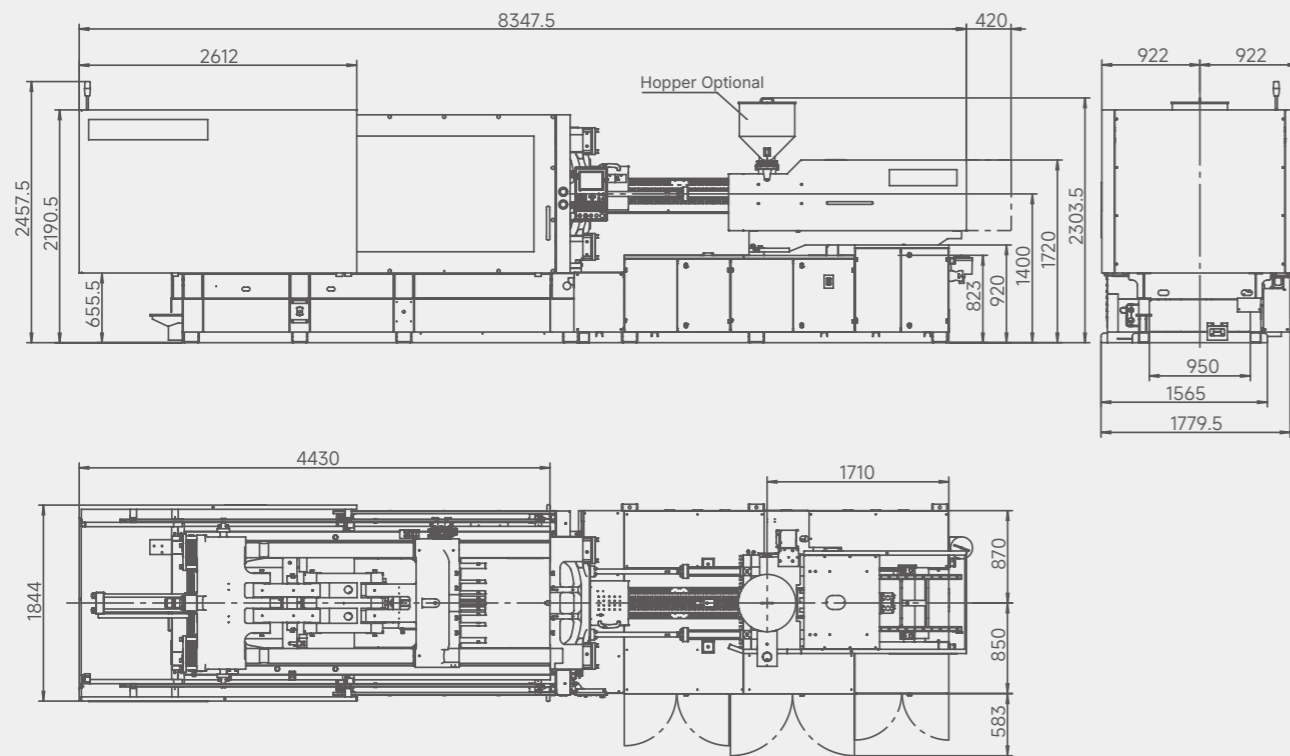
MK6.6/SI+ | Platen and Machine Dimensions

JM568-MK6.6/SI+

Platen Dimensions

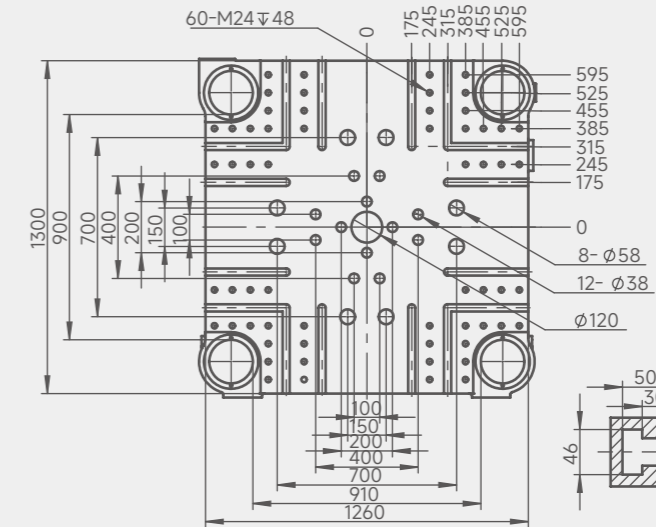


Machine Dimensions (LxWxH)

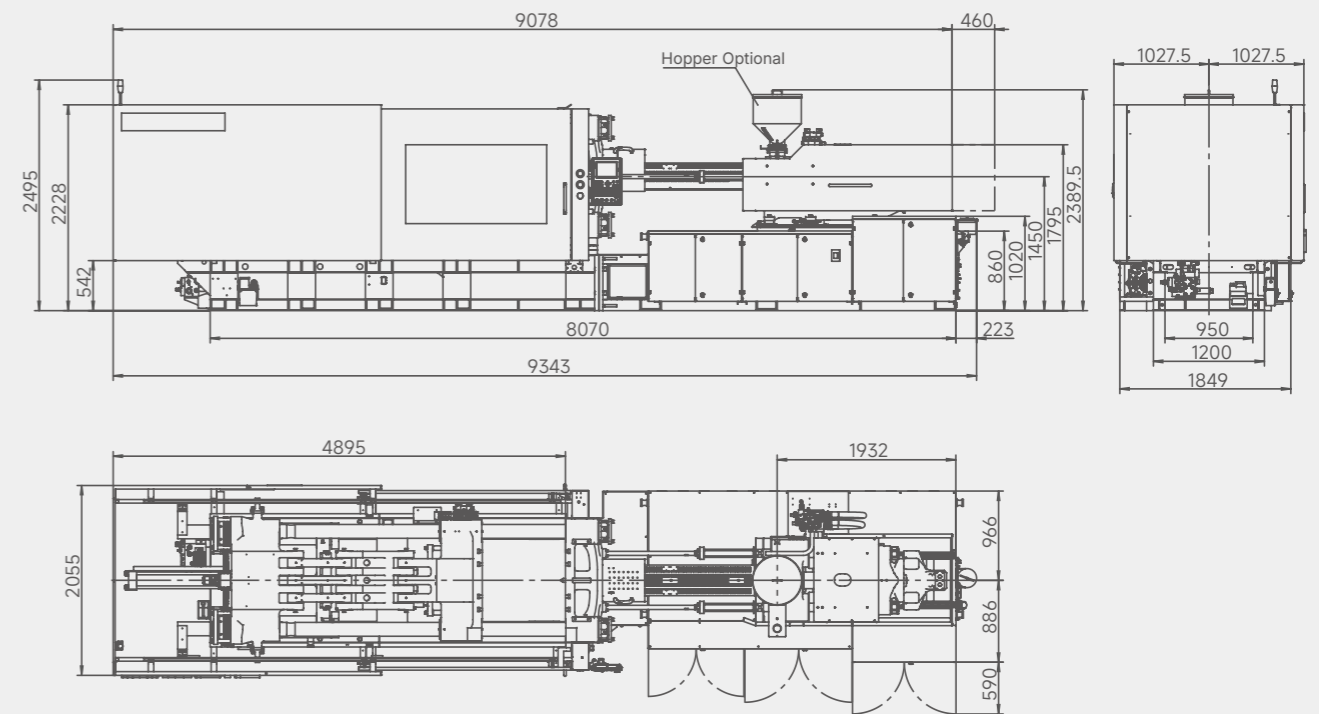


JM658-MK6.6/SI+

Platen Dimensions

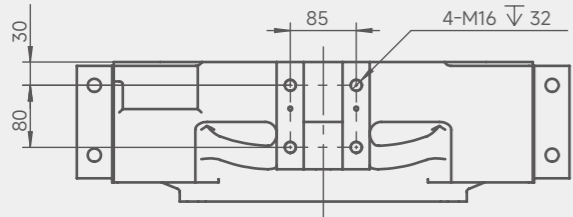


Machine Dimensions (LxWxH)

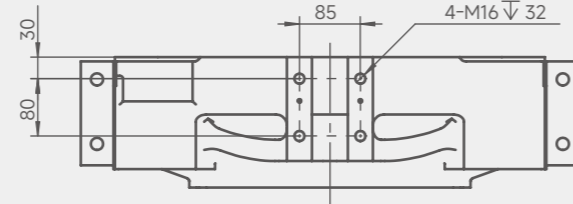


MK6.6/SI+ | Platen and Machine Dimensions

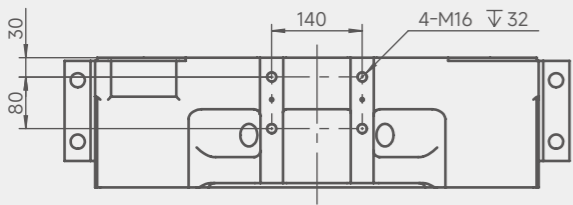
JM88-MK6.6/SI+



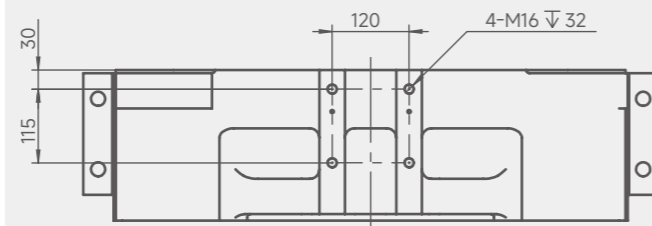
JM128-MK6.6/SI+



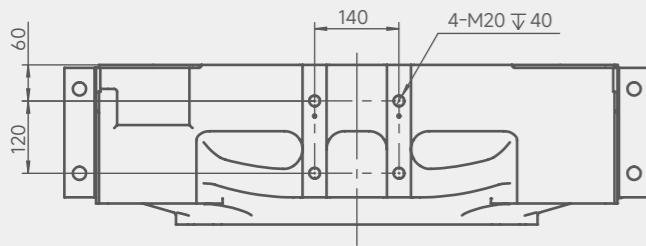
JM168-MK6.6/SI+



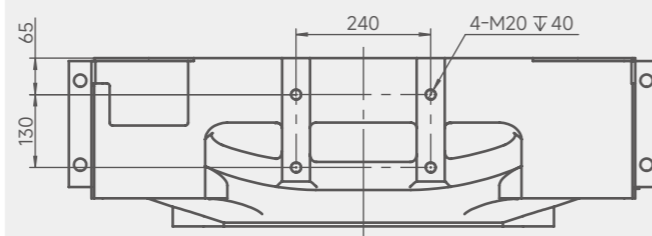
JM208-MK6.6/SI+



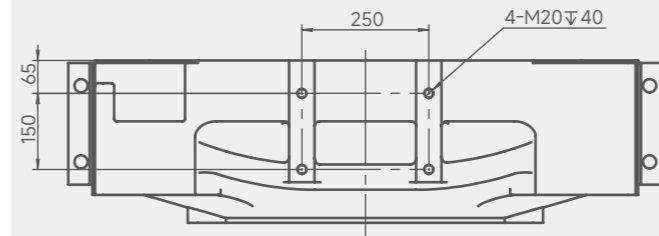
JM268-MK6.6/SI+



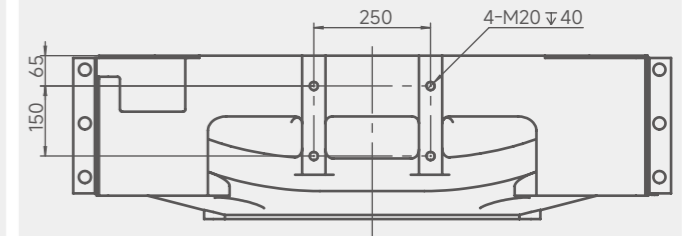
JM328-MK6.6/SI+



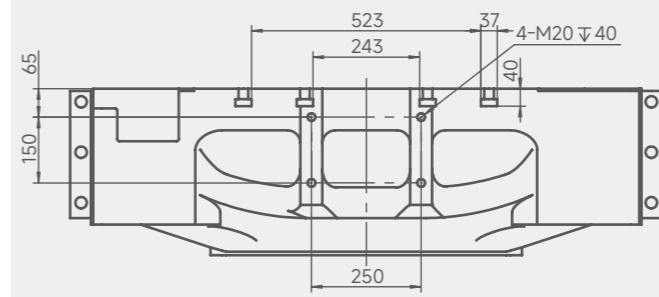
JM408-MK6.6/SI+



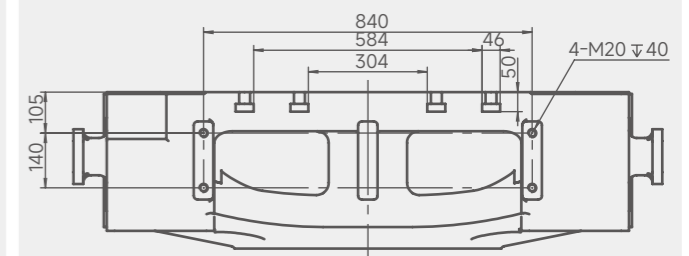
JM488-MK6.6/SI+



JM568-MK6.6/SI+



JM658-MK6.6/SI+





“Your Vision is Our Mission”